

# IMPROVING INLAND WATERWAYS TRANSPORTATION INFRASTRUCTURE

## WATERWAYS COUNCIL, INC. (WCI)



WCI is the national public policy organization improving America's inland waterways through efficient operations and maintenance, rehabilitation, and modernization of locks and dams.

**WATERWAYS**  
COUNCIL, INC.



A broad-based coalition of carriers, shippers, manufacturers, energy providers, agriculture and agribusiness interests, organized labor, contractors, ports, waterways service providers, river tourism, and others focused on delivering better river transportation.

## LEADERSHIP, DELIVERED.

### THE RESPECTED VOICE TO CONGRESS & THE ADMINISTRATION

For more than 20 years, WCI continues to impact public policy

- **Increasing funding for locks and dams.** WCI's advocacy has resulted in **more than \$5 billion** in additional construction funding since 2014 through Congressional outreach on appropriations and supplemental funding.
- **Maximizing Inland Waterway Trust Fund (IWTF) dollars.** WCI has successfully urged multiple policy changes in Water Resources Development Act legislation, adjusting the cost-share from the IWTF, stretching those dollars further, and recognizing the many other beneficiaries of locks and dams.
- **Creating jobs, advancing construction projects.** Record levels of construction funding in 8 of the past 14 years helps put America's building trades to work on lock infrastructure construction. Working to start – and finish – more modernization and rehabilitation projects.
- **Record Levels of Operation & Maintenance Funding.** Since 2013, WCI advocacy has helped achieve consistent plus-ups to O&M funding, resulting in lowered unscheduled lock outages.
- **Sticking with the plan.** WCI is a trusted voice to Congress and the Administration on adhering to the Capital Investment Strategy formulated by the Corps of Engineers and Inland Waterways Users Board to prioritize projects that benefit the Nation.

**Action Alerts:  
Text LOCKS to  
202-979-0993**

**HOW?** • Direct Federal Affairs Outreach • Media & Public Education • Grassroots Activism

# WHY WCI?

If Your Business Success Relies on Waterways Transportation. If Lock & Dam Construction Puts Your Members to Work. If You Ship Anything Domestically...

**YOU'RE IMPACTED BY INLAND WATERWAYS INFRASTRUCTURE!**

## YOUR VOICE ON LOCKS & DAMS

- **Supporting the National Waterways Foundation and Inland Waterways Users Board.**

WCI provides staff support to this important non-profit for research and the advisory board to Congress and the Administration.

- **Award-winning media and public education.**

TV commercials, social media, strategic ads in policy-influencer publications like *Politico*, *Roll Call*, *The Hill*, and others to promote the inland waterways transportation system.

## CONNECTING OUR MEMBERS

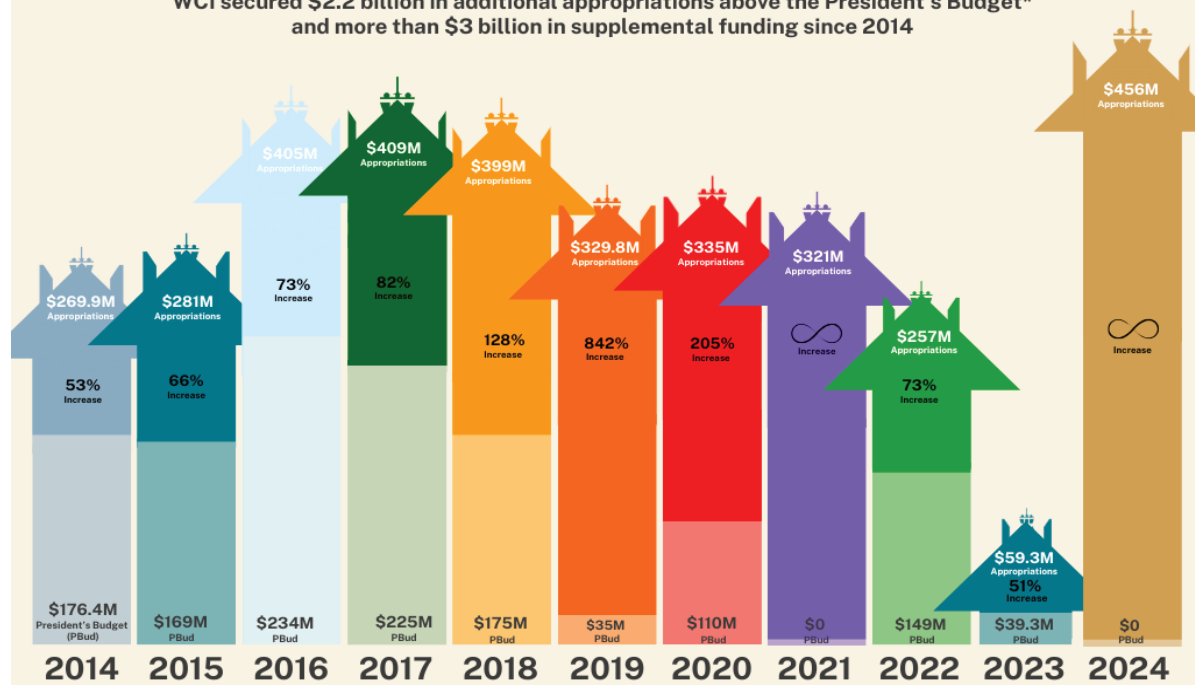
WCI provides multiple opportunities for members to connect and network:

- Bi-weekly Roundtable Calls. Learn the latest legislative developments, WCI staff activity, and other timely topics
- Bi-weekly E-Brief updates
- *Capitol Currents* newsletter
- Website, social media, and our grassroots Action Alerts
- Annual Meeting & Waterways Symposium each November
- Washington D.C. Meeting & Legislative Fly-In each February
- 97% member retention rate 2021-2024

### More than \$5 Billion - Delivered.

Annual Funding for Construction and Major Rehab Projects on Our Inland Waterways

WCI secured \$2.2 billion in additional appropriations above the President's Budget\* and more than \$3 billion in supplemental funding since 2014



\*Annual Energy & Water Appropriations, in millions of dollars

IMPROVE RIVER TRANSPORTATION INFRASTRUCTURE

**JOIN WCI**

WCI@waterwayscouncil.org | [WWW.WATERWAYSOUNCIL.ORG](http://WWW.WATERWAYSOUNCIL.ORG)

499 S. Capitol St, SW, Suite 401, Washington, DC 20003 • 202.765.2166

