

# ECONOMIC IMPACT OF WEST VIRGINIA'S INLAND WATERWAYS

NATIONAL WATERWAYS  
FOUNDATION

IN 2018, WEST VIRGINIA'S PORTS, INLAND WATERWAYS,  
AND INLAND WATERWAYS-DEPENDENT INDUSTRIES SUPPORTED

Nearly **138,200 jobs**

**\$8.5 billion** in personal income

**\$15.2 billion** in Gross State Product

**\$35.8 billion** in total output

...Giving rise  
to more than  
**\$1.3 billion**  
in state & local  
tax revenue

West Virginia has

**680  
MILES**

of navigable inland  
waterways, ranking it

**16<sup>th</sup>** in the  
nation

## INLAND WATERWAYS SUPPORT WEST VIRGINIA'S KEY INDUSTRIES

Industry Sub-Category	Percent of Goods Shipped by Water (Tons)	Direct West Virginia Jobs
Crop production	⌚ <b>24.5%</b> of inbound	890*
Construction	⌚ <b>22.3%</b> of inbound	36,370
Utilities	⌚ <b>14.6%</b> of inbound	77,550
Nondurable manufacturing	⌚ <b>8.6%</b> of inbound	21,650
Oil & gas extraction	⌚ <b>8.5%</b> of outbound	71,160

\*Total for Agriculture, Forestry, Fishing, and Hunting sector (NAICS 11)

## TOP INLAND WATERWAYS COMMODITIES BY WEIGHT (comprising 88% of total tonnage)

**Coal, lignite,  
and coal coke** **28.1  
million  
tons**

**Sand, gravel,  
shells, clay,  
salt, and slag** **8.1  
million  
tons**

**Petroleum  
products** **6.5  
million  
tons**

## TOP INLAND WATERWAYS COMMODITIES BY VALUE (comprising 75% of total value)

**Other coal and petroleum  
products, including LNGs,  
lubricating oils and greases,  
and petroleum asphalt** **\$1.1  
billion**

**Coal** **\$565.0  
million**

**Fuel oils** **\$537.4  
million**

## WEST VIRGINIA'S INLAND WATERWAY ASSETS AT A GLANCE

**Ohio, Monongahela,  
and Kanawha Rivers**

**1 public  
ports**

In 2018,  
**48.8M** tons of  
freight  
valued at

**\$2.9 BILLION**

moved on West Virginia's  
inland waterways, which  
is equivalent to

**1.2 MILLION TRUCKS**

Avoided trucks translates into  
**reduced congestion,  
emissions, and crashes,**  
lessening impacts on highway  
infrastructure

## BENEFITS OF INLAND WATERWAYS TRANSPORTATION

America's inland waterways system is vital to our nation's competitiveness and economic growth. The inland waterways efficiently, sustainably, cost-effectively and safely transport critical commodities like agricultural goods, energy products, building materials and industrial chemicals to destinations within the U.S. and to deep water ports for export. In 2018, 766.3 million tons of goods valued at \$507.3 billion moved on the U.S. inland waterways system, and by 2045 it is expected to increase by 23% to 942 million tons valued at \$871 billion. Barge transportation is the safest, most environmentally-friendly, economical, and fuel-efficient way to move our nation's goods for use domestically and for export. On a single gallon of fuel, one barge can move freight more than four times farther than trucks, releasing 10 times fewer emissions.

Called "the backbone of the transportation logistics system," the inland waterways are a key part of the United States' transportation supply chain. The system includes a vast network of 12,000 miles of connecting waterways and 218 locks. However, the majority of locks and dams on the Mississippi River system were constructed during the 1930s and are operating well beyond their 50-year design life. Modernizing the nation's inland waterways system will support and create American jobs, increase U.S. exports, and inject billions of dollars into the U.S. economy to power our growth for the next 50 years.

Sources: U.S. Department of Agriculture Inland Waterways Study (2019); U.S. Army Corps of Engineers Waterborne Commerce Statistics; Federal Highway Administration Freight Analysis Framework; U.S. Department of Labor Bureau of Labor Statistics Occupational Employment Statistics; IMPLAN

One standard  
**15-barge tow**  
moves the equivalent volume of



**216 rail cars**



or  
**1,050 trucks**



Source: National Waterways Foundation

Over the next 10 years, **constructing all authorized navigation projects and rehabilitating existing locks** could have significant national impacts, leading to a **20% increase in jobs, 39% increase in Gross Domestic Product, and 40% increase in output**

Source: USDA



The **US' inland waterways system** saves between  
**\$7 billion & \$9 billion**  
annually over the cost of other modes due to  
**efficiency and low cost**

Source: USDA

The National Waterways Foundation estimates overall investment needs of inland waterways at  
**\$8 billion over the next 10 years**



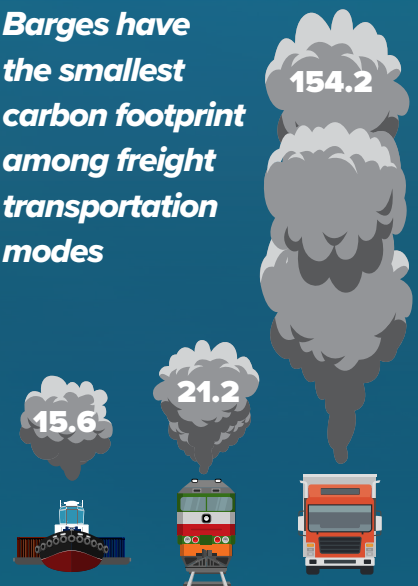
The U.S. currently has a  
**\$5.35 per metric ton advantage** over Brazil when shipping soybeans on the inland waterways system from Davenport, Iowa, to Shanghai, China.

Source: USDA

In 2016,  
**250M recreational visitors** of Corps lakes resulted in  
**\$10.6B in total trip spending**, supporting over  
**189K jobs nationwide**

Source: USACE

**Barges have the smallest carbon footprint among freight transportation modes**



Tons of CO2 per Million Ton-Miles

Compared to barges, moving an identical amount of cargo by rail generates 30% more emissions, while trucks generate 1,000% more emissions.

Source: Texas Transportation Institute