

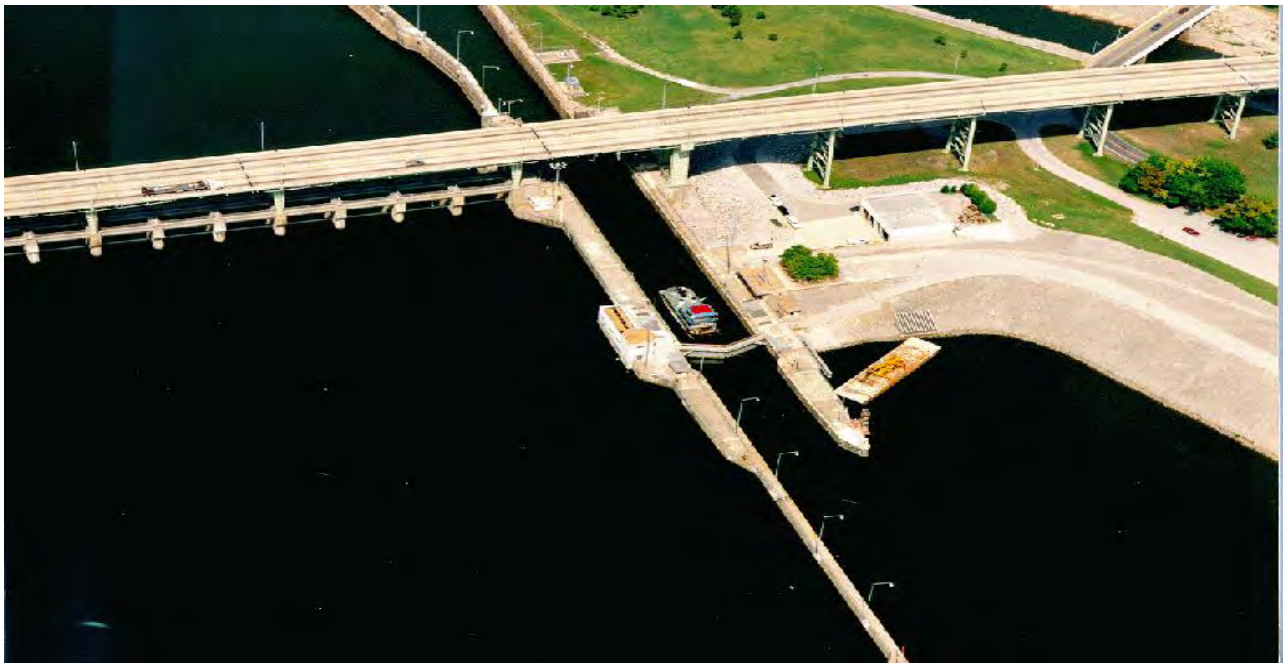


**WATERWAYS**  
COUNCIL, INC.

| North Quincy Street • Suite 200 • Arlington, VA 22203 • (703) 373-2261 • [www.waterwayscouncil.org](http://www.waterwayscouncil.org)

## Chickamauga Lock and Dam

Chickamauga Lock and Dam is located at mile 471 of the Tennessee River in the port of Chattanooga, Tennessee. The Tennessee Valley Authority (TVA) built the project in the 1930's. The lock was placed in temporary operation in 1938 and was completed in 1940. The lock chamber measures 360' x 60' and the project also includes a hydroelectric plant and a highway bridge.



Chickamauga Lock has a history of problems associated with concrete expansion. A study conducted by TVA recommended the construction of a new 600' x 110' lock chamber. The existing lock requires aggressive maintenance to confront its Alkali Aggregate Reaction (AAR) problem. This expansion of concrete features is causing misalignment of mechanical components and would eventually cause the lock to be closed. Congress has authorized construction of a 110' x 600' replacement lock riverward of the existing structure which will remove four of the existing spillway bays. Project construction began with utility relocations in 2004 and will continue with road and bridge relocations in 2005.

The current schedule calls for cofferdam construction to begin in 2006 and lock construction in 2008, depending upon funding.

<b>Chickamauga Lock - 2003 Commodity Distribution</b> <i>(values in millions of dollars)</i>				
<b>Commodity</b>	<b>Tonnage</b>	<b>Percent</b>	<b>Value</b>	<b>Percent</b>
<b>Coal</b>	<b>3,030</b>	<b>0.2%</b>	<b>\$1</b>	<b>0.2%</b>
<b>Petroleum</b>	<b>271,292</b>	<b>15.3%</b>	<b>\$87</b>	<b>19.5%</b>
<b>Aggregates</b>	<b>95,074</b>	<b>5.4%</b>	<b>\$2</b>	<b>0.4%</b>
<b>Grain</b>	<b>517,555</b>	<b>29.2%</b>	<b>\$60</b>	<b>13.4%</b>
<b>Chemicals</b>	<b>244,388</b>	<b>13.8%</b>	<b>\$112</b>	<b>25.1%</b>
<b>Ores/Minerals</b>	<b>516,480</b>	<b>29.1%</b>	<b>\$21</b>	<b>4.7%</b>
<b>Iron/Steel</b>	<b>93,946</b>	<b>5.3%</b>	<b>\$87</b>	<b>19.5%</b>
<b>Other</b>	<b>30,747</b>	<b>1.7%</b>	<b>\$77</b>	<b>17.2%</b>
<b>Total</b>	<b>1,772,512</b>	<b>100%</b>	<b>\$447</b>	<b>100%</b>
<b>** Insufficient barge operators to release this tonnage.</b>				
<b>Source: U.S. Army Corps of Engineers Waterborne Commerce Statistics</b>				

According to the Corps of Engineers Waterborne Commerce Statistics for 2003, more than 1.7 million tons of commodities were shipped through Chickamauga Lock. These shipments had a combined value of \$447 million. The leading commodity shipped through Chickamauga Lock was corn.

The state that shipped the most tonnage through Chickamauga Lock was Louisiana, moving 586 thousand tons through the lock. Of this amount, ores and minerals was the leading commodity.

<b>Chickamauga Lock</b> <b>2003 Barge Tonnage Shipped by States</b> <i>(values in millions of dollars)</i>			
<b>Shipments By</b>	<b>Tons</b>	<b>Value</b>	<b>Top Commodity</b>
<b>Louisiana</b>	<b>586,256</b>	<b>\$ 61</b>	<b>Ores/Minerals</b>
<b>Tennessee</b>	<b>415,374</b>	<b>\$ 226</b>	<b>Chemicals</b>
<b>Illinois</b>	<b>402,189</b>	<b>\$ 74</b>	<b>Grain</b>
<b>Kentucky</b>	<b>141,104</b>	<b>\$ 25</b>	<b>Petroleum</b>
<b>Iowa</b>	<b>138,730</b>	<b>\$ 14</b>	<b>Grain</b>
<b>Source: U.S. Army Corps of Engineers Waterborne Commerce Statistics</b>			

Tennessee received 1.4 million tons that moved through Chickamauga Lock, with a combined value of over \$279 million. Grain, ores and minerals made up 83% of this amount. Louisiana was second in receipts of Chickamauga Lock traffic, with 99 thousand tons. See map for a graphical representation of state tonnage movements through Chickamauga Lock.

<b>Chickamauga Lock</b>			
<b>2003 Barge Tonnage Shipped to States</b>			
<i>(values in millions of dollars)</i>			
<b>Receipts By</b>	<b>Tons</b>	<b>Value</b>	<b>Top Commodity</b>
<b>Tennessee</b>	<b>1,448,869</b>	<b>\$ 279</b>	<b>Ores/Minerals</b>
<b>Louisiana</b>	<b>99,228</b>	<b>\$ 19</b>	<b>Grain</b>
<b>Illinois</b>	<b>79,900</b>	<b>\$ 51</b>	<b>Chemicals</b>
<b>Missouri</b>	<b>43,822</b>	<b>\$ 20</b>	<b>Chemicals</b>
<b>Alabama</b>	<b>33,925</b>	<b>\$ 32</b>	<b>Iron/Steel</b>
<b>Source: U.S. Army Corps of Engineers Waterborne Commerce Statistics</b>			

Louisiana's 3rd Congressional District was the leading shipper of commodities through Chickamauga Lock. This district shipped 573 thousand tons of grain, ores, minerals, and other commodities, with a combined value of \$59 million. Tennessee District 2 was next, with 307 thousand tons worth \$177 million. See map for the top 10 Congressional Districts shipping tonnage through Chickamauga Lock.

<b>Chickamauga Lock</b>				
<b>2003 Barge Tonnage Shipped by Congressional Districts</b>				
<i>(values in millions of dollars)</i>				
<b>Shipments By</b>	<b>District</b>	<b>Tons</b>	<b>Value</b>	<b>Top Commodity</b>
<b>Louisiana</b>	<b>3</b>	<b>572,736</b>	<b>\$ 59</b>	<b>Ores/Minerals</b>
<b>Tennessee</b>	<b>2</b>	<b>307,308</b>	<b>\$177</b>	<b>Chemicals</b>
<b>Illinois</b>	<b>17</b>	<b>225,642</b>	<b>\$ 23</b>	<b>Grain</b>
<b>Illinois</b>	<b>12</b>	<b>143,409</b>	<b>\$ 47</b>	<b>Petroleum</b>
<b>Iowa</b>	<b>1</b>	<b>123,464</b>	<b>\$ 13</b>	<b>Drain</b>
<b>Source: U.S. Army Corps of Engineers Waterborne Commerce Statistics</b>				

The leading Congressional District in receipts of Chickamauga Lock commodities was Tennessee District 3, which received over 1.5 million tons. This tonnage was mostly ore and minerals, and had a value of over \$204 million. See map for the top 10 Congressional Districts receiving Chickamauga Lock tonnage.

<b>Chickamauga Lock</b>				
<b>2003 Barge Tonnage Shipped to Congressional Districts</b>				
<i>(values in millions of dollars)</i>				
<b>Shipments By</b>	<b>District</b>	<b>Tons</b>	<b>Value</b>	<b>Top Commodity</b>
<b>Tennessee</b>	<b>3</b>	<b>1,013,183</b>	<b>\$ 204</b>	<b>Grain</b>
<b>Tennessee</b>	<b>2</b>	<b>355,352</b>	<b>\$ 10</b>	<b>Ores/Minerals</b>
<b>Louisiana</b>	<b>3</b>	<b>97,706</b>	<b>\$ 18</b>	<b>Grain</b>
<b>Missouri</b>	<b>3</b>	<b>43,822</b>	<b>\$ 20</b>	<b>Chemicals</b>
<b>Tennessee</b>	<b>8</b>	<b>31,900</b>	<b>\$ 12</b>	<b>Chemicals</b>
<b>Source: U.S. Army Corps of Engineers Waterborne Commerce Statistics</b>				