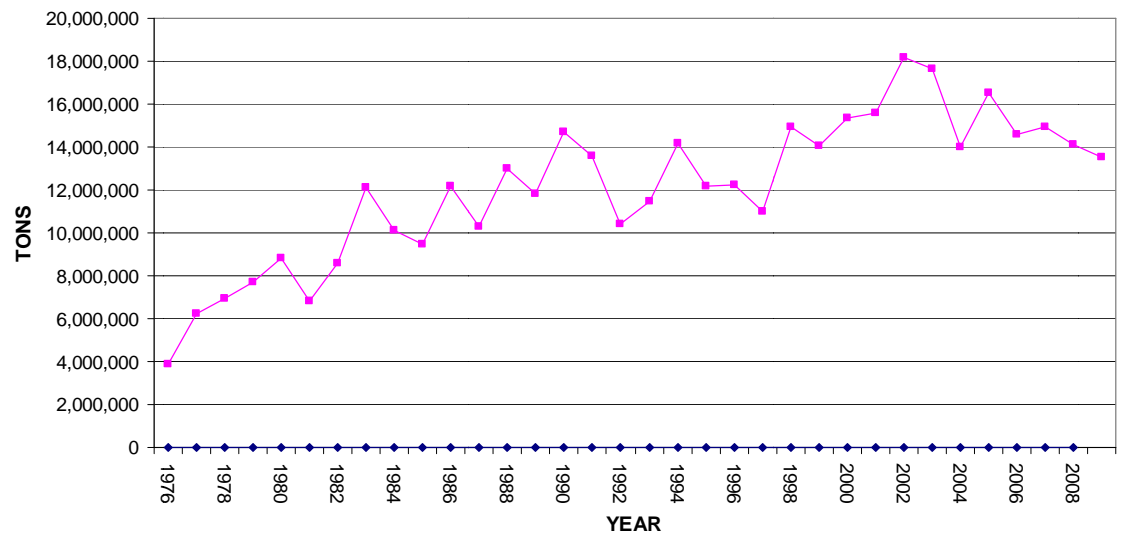


## Grain

Along with Iron & Steel grain is the Ohio River basin's fourth largest commodity group. There were 145 waterside grain elevators, plants and terminals in the basin, which shipped or received grain by barge in 2008. Ohio River System waterways serve grain shippers primarily by affording access to the export and industrial markets for grain. These markets have been the most dynamic sector of the grain market and the strong growth in grain traffic in the basin reflects the prominence of these sectors in waterborne movements. Large movements of grains are made by water out of the basin to the export market through lower Mississippi River ports. The only other significant movements of barged grains are those to the South, most importantly to processors in the Tennessee River Valley.

**HISTORIC OHIO RIVER BASIN GRAIN TRAFFIC 1975 - 2008**



**WATERWAYS**  
COUNCIL, INC.

801 North Quincy Street  
Suite 200

Arlington, VA 22203  
(703) 373-2261

[www.waterwayscouncil.org](http://www.waterwayscouncil.org)

## Grain

Grain shipments on the Ohio River basin's waterways totaled over 14 million tons in 2008, or 5.2% of all barge cargo. Of this amount, approximately 1.2 million tons were shipped into the basin from outside. Just over 10.5 million tons were shipped out of the basin, and about 1.8 million tons moved within the Ohio River System. The 13.5 million tons moving by barge in 2008 had a combined value of over \$2.3 billion, which is almost 7.6 per cent of the value of the basin's commodities moving by water.

The largest grain commodity that moves by barge in the basin is corn. Almost all of the more than 7.0 million tons of corn which moved in 2008 fell into one of two categories: moving from the upper Mississippi, Illinois River or Ohio River to the Tennessee River for processing (24.3%); or moving from the lower Ohio River to the lower Mississippi River for export (75.7%). Soybeans are the second ranking waterborne grain.

<b>Ohio River Basin Barge Traffic – 2008</b> (values in millions of \$)		
<b>Grain</b>	<b>Tonnage</b>	<b>Value</b>
<b>CORN</b>	<b>7,051,871</b>	<b>\$733</b>
<b>SOYBEANS</b>	<b>2,865,879</b>	<b>\$619</b>
<b>OILSEEDS NEC</b>	<b>1,319,246</b>	<b>\$538</b>
<b>ANIMAL FEED, PREPS</b>	<b>1,275,485</b>	<b>\$210</b>
<b>WHEAT</b>	<b>831,876</b>	<b>\$100</b>
<b>GRAIN MILL PRODUCTS</b>	<b>112,163</b>	<b>\$52</b>
<b>SORGHUM GRAINS</b>	<b>39,370</b>	<b>\$4</b>
<b>BARLEY &amp; RYE</b>	<b>28,690</b>	<b>\$2</b>
<b>RICE</b>	<b>13,985</b>	<b>\$5</b>
<b>WHEAT FLOUR</b>	<b>1,703</b>	<b>\$0</b>
<b>TOTAL</b>	<b>13,540,268</b>	<b>\$2,265</b>
<i>Source: U.S. Army Corps of Engineers Waterborne Commerce Statistics</i>		

Most of the grain that is moved by barge in the Ohio River basin originated in Illinois. Corn, oilseeds, soybeans, wheat and animal feed preparations were shipped out of Illinois on the Ohio, Mississippi and Illinois Rivers.

<b>Ohio River Basin Barge Traffic Grain Shipped by State – 2008</b> (values in millions of \$)			
<b>State</b>	<b>Tonnage</b>	<b>Value</b>	<b>Leading Grain</b>
<b>Illinois</b>	<b>3,601,687</b>	<b>\$655</b>	<b>Corn</b>
<b>Indiana</b>	<b>3,201,190</b>	<b>\$457</b>	<b>Corn</b>
<b>Kentucky</b>	<b>2,459,851</b>	<b>\$414</b>	<b>Corn</b>
<b>Ohio</b>	<b>2,038,243</b>	<b>\$320</b>	<b>Corn</b>
<b>Tennessee</b>	<b>458,042</b>	<b>\$71</b>	<b>Soybeans</b>
<i>Source: U.S. Army Corps of Engineers Waterborne Commerce Statistics</i>			

The main destinations for grain barges originating in the basin were export facilities in Louisiana. Within the basin, processing plants in Decatur and Guntersville Alabama and Loudoun and Chattanooga Tennessee were major destinations for corn and other grains.

<b>Ohio River Basin Barge Traffic Grain Received by State – 2008</b> (values in millions of \$)			
<b>State</b>	<b>Tonnage</b>	<b>Value</b>	<b>Leading Grain</b>
<b>Louisiana</b>	<b>10,515,982</b>	<b>\$1,784</b>	<b>Corn</b>
<b>Alabama</b>	<b>2,280,839</b>	<b>\$315</b>	<b>Corn</b>
<b>Kentucky</b>	<b>268,597</b>	<b>\$58</b>	<b>Soybeans</b>
<b>Illinois</b>	<b>239,984</b>	<b>\$46</b>	<b>SoyBeans</b>
<b>Tennessee</b>	<b>123,884</b>	<b>\$13</b>	<b>Corn</b>
<i>Source: U.S. Army Corps of Engineers Waterborne Commerce Statistics</i>			

